

# ADVANCED ESTIMATION

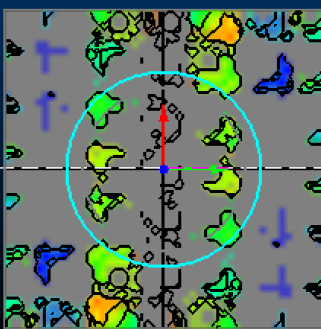
Accurately & Efficiently Estimate Mineral Resources

## OVERVIEW

Advanced Estimation is a state-of-the-art and industry bench marked software solution for mineral resource and reserve estimation.

The sophisticated software provides access to a comprehensive set of geostatistical algorithms that can be used, and comes as an optional module to the renowned Studio RM.

The software has a Guided Workflow which is an integrated set of dialogs that lead the user through the steps required for a univariate or multivariate estimation study. In addition, all the standard Studio commands are available from the ribbon.



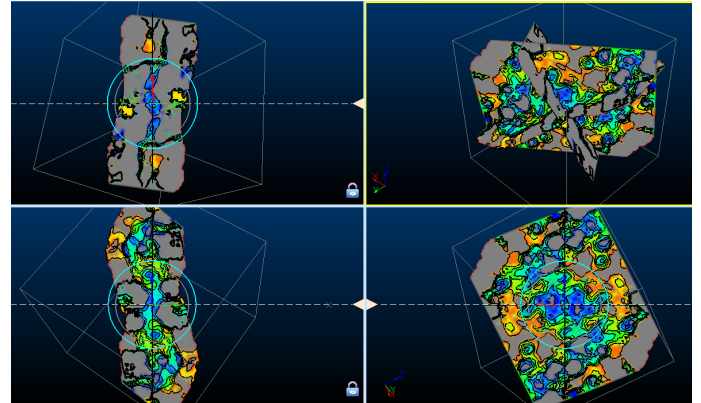
### WHO USES ADVANCED ESTIMATION?

- Resource Geologists
- Geostatisticians



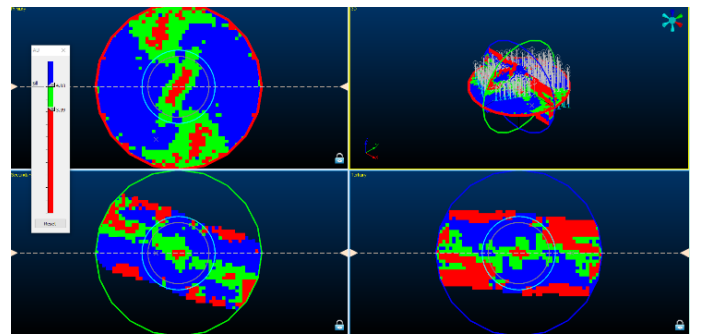
## KEY BENEFITS

- Increased confidence in estimates.
- Greater accuracy and precision.
- Risk management.
- Time saving.



## FEATURE HIGHLIGHTS

- Uniform conditioning & SMU analysis.
- Data import & analysis.
- Variography with 3D maps and multivariate auto fitting.
- Kriging neighbourhood analysis
- Multivariate kriging.
- Conditional simulation for recoverable resource evaluation and classification for recoverable resource evaluation.
- Up to 100x faster estimates compared to using ESTIMA.



### Horizontal Directions

No. of directions:

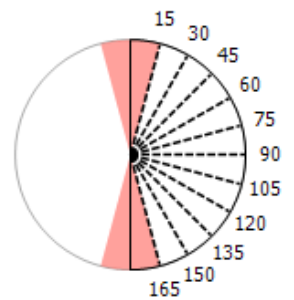
Tolerance angle:

Range angle:

Initial direction

Tolerance area

Additional directions



## BOOK A DEMO

To book a free demo of Datamine's Advanced Estimation, contact your local Datamine office.

## GLOBAL OFFICES

AUSTRALIA | BRAZIL | CANADA | CHILE | CHINA  
 GHANA | INDIA | INDONESIA | KAZAKHSTAN  
 MEXICO | PERU | PHILIPPINES | RUSSIA  
 SOUTH AFRICA | TURKEY | UNITED KINGDOM | USA